

GEORGE EAST AND WEST

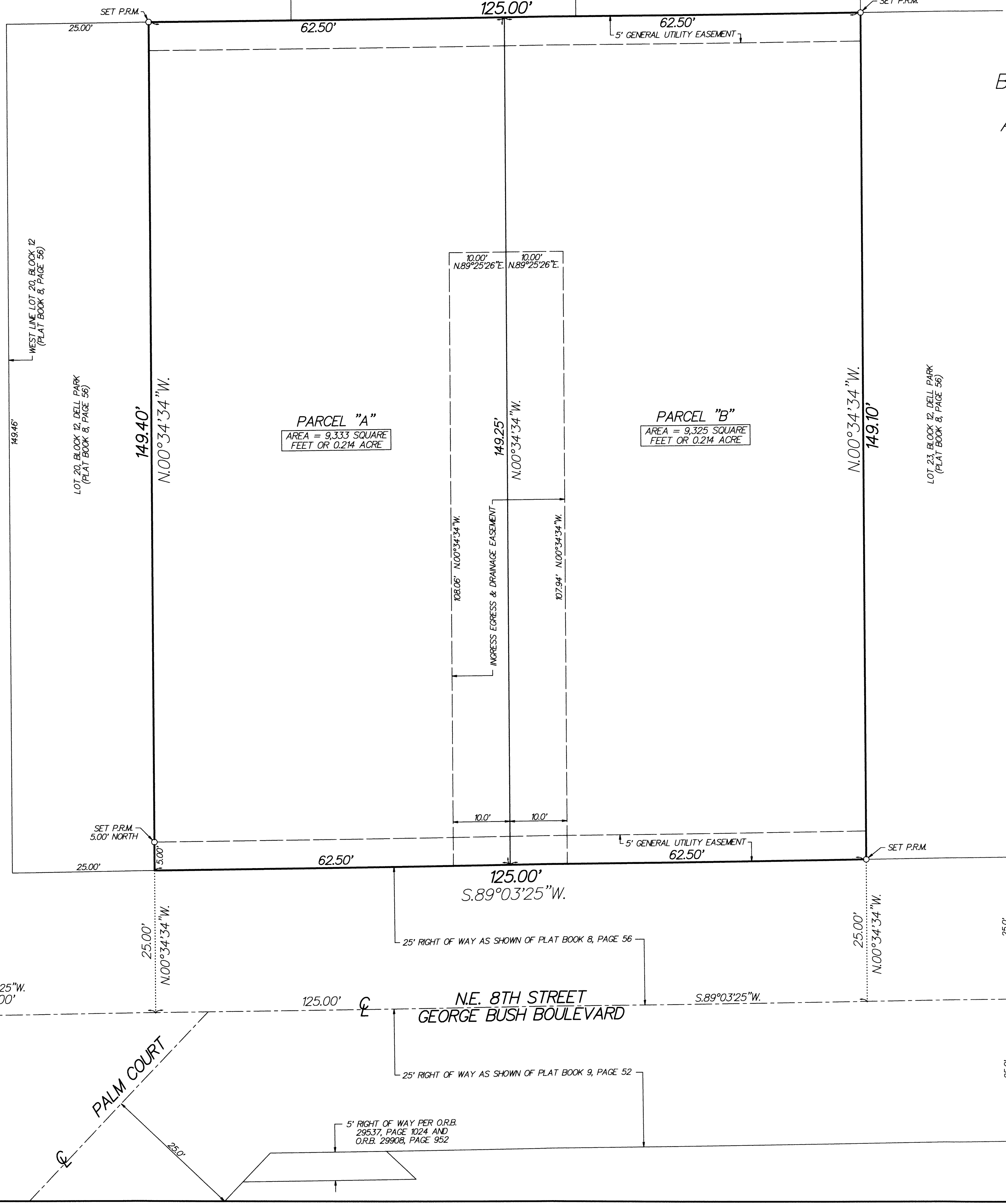
45

LOT 13, BLOCK 12
(PLAT BOOK 8, PAGE 56)

LOT 12, BLOCK 12
(PLAT BOOK 8, PAGE 56)

LOT 11, BLOCK 12
(PLAT BOOK 8, PAGE 56)

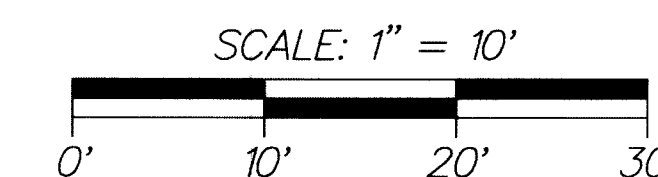
N.89°11'43"E.
125.00'



BEING A REPLAT OF THE EAST HALF OF LOT 20 AND ALL OF LOTS 21 AND 22, BLOCK 12, DELL PARK, ACCORDING TO THE PLAT THEREOF AS RECORDED IN PLAT BOOK 8, PAGE 56 (P.R.P.B.CO.), BEING IN SECTION 9, TOWNSHIP 46 SOUTH, RANGE 43 EAST, CITY OF DELRAY BEACH, PALM BEACH COUNTY, FLORIDA

SHEET 2 OF 2

THIS INSTRUMENT WAS PREPARED BY PAUL D. ENGLE, IN THE OFFICE OF ENGLE LAND SURVEYING LLC, 955 N.W. 17TH AVENUE, SUITE K-1, DELRAY BEACH, FLORIDA 33445 (561) 276-4501



LEGEND:
 CL = CENTERLINE
 P.R.M. = PERMANENT REFERENCE MONUMENT (4"x4" CONCRETE MONUMENT STAMPED "PRM LB8447") UNLESS STATED OTHERWISE
 P.R.P.B.CO. = PUBLIC RECORDS OF PALM BEACH COUNTY
 O.R.B. = OFFICIAL RECORDS BOOK

EAST LINE OF SECTION 8-46-43 S.0°33'05"E (BASIS OF BEARING)

NE. 2ND AVENUE

PALM COURT

NE. 8TH STREET
GEORGE BUSH BOULEVARD